

# #INSPIREINCLUSION

## INTERNATIONAL WOMEN'S DAY GROUP SHOW

OPENING: Fri 1 Mar 6-8pm  
DATES: 29 Feb - 14 Mar 2024



Vi by Lucy Lucy  
Acrylic on canvas  
45x35cm  
\$1000

This painting explores the connection between women and their weaving craft, woven into the fabric of civilization itself. It is a tribute to the women who worked in the shadow of history. It delves into the significance of the art of weaving itself where connection, nurturing and healing are valued.



Divine  
by Kimberley Kermode  
Acrylic on Birch Plywood framed  
23 x 23  
\$300



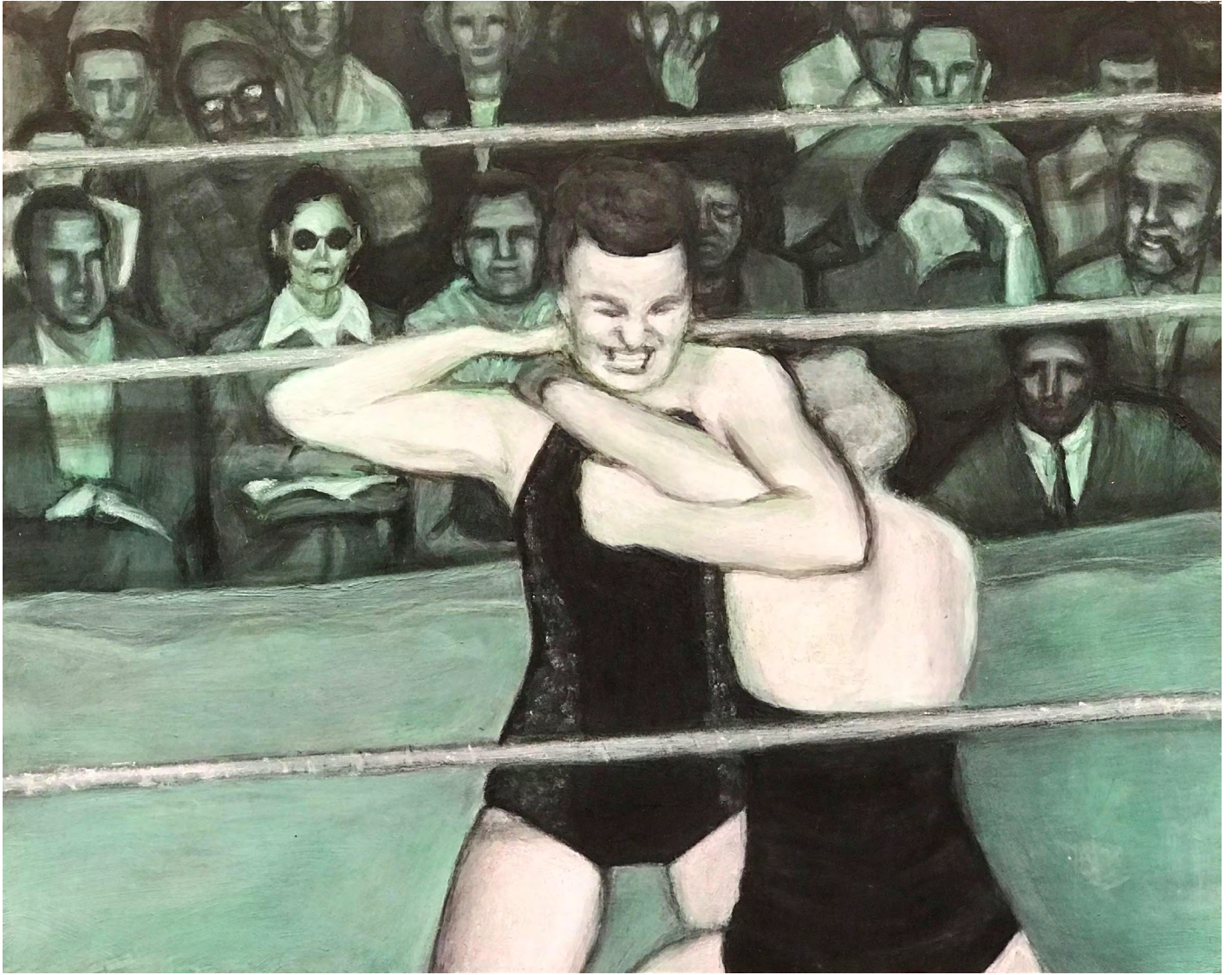
Just A Number (The Privilege)  
by Alexia Novella  
Oil on panel  
25 x 20cm  
\$650 **SOLD**



Stronger Together  
by Julia Catania  
Hand-embroidered cotton thread on linen, vintage lace, polyfill  
20 x 27 x 8cm  
\$295



Summer's night  
by Nicole Willis  
Oil on wood  
25 x 20cm  
\$250

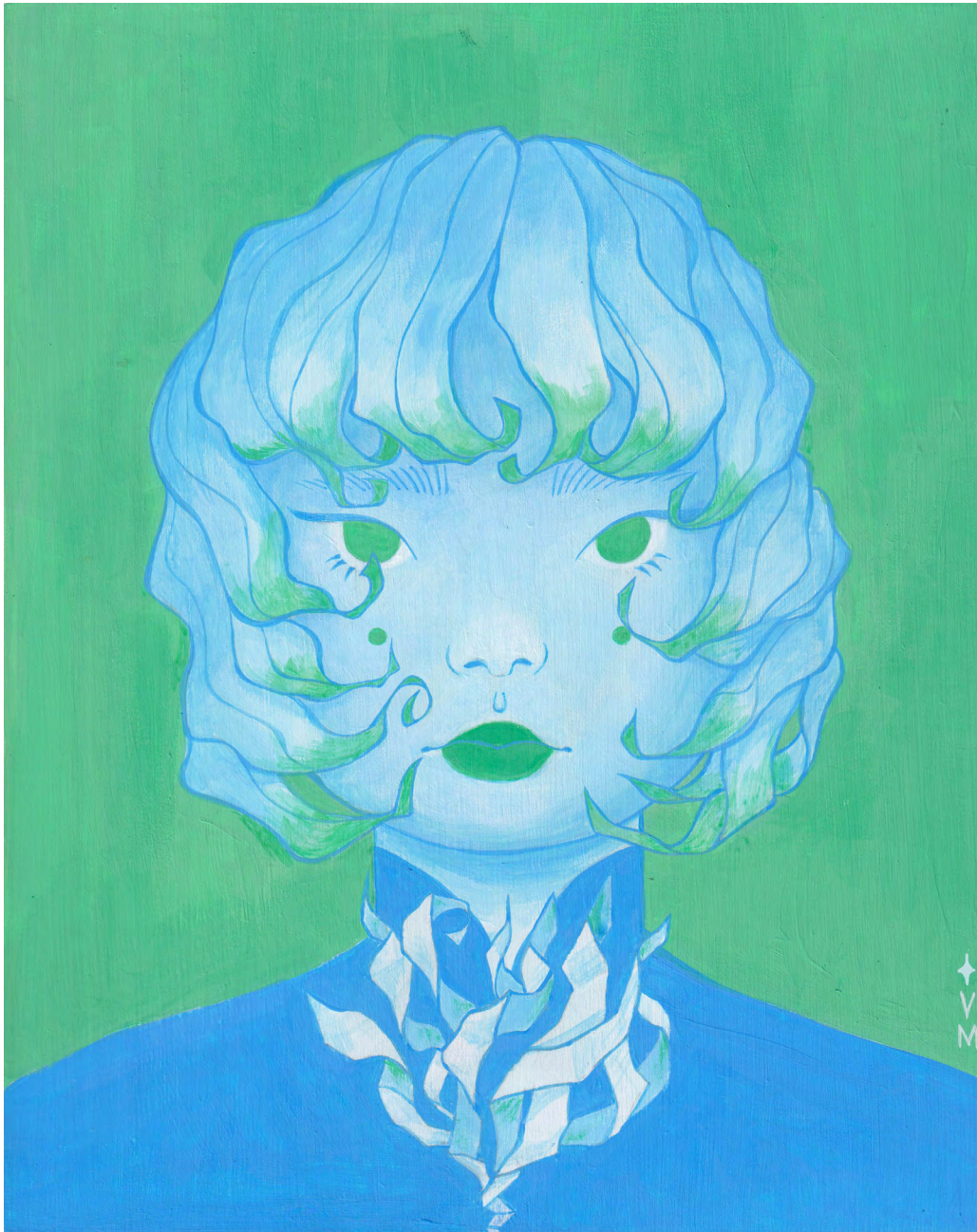


Untitled  
by Julia Novella  
Mixed Media on wood panel  
25cm x 20cm  
\$400 **SOLD**



The Women We Are  
by Meg Kolac  
Acrylic gouache on illustration board framed  
64cm x 49cm  
\$380 **SOLD**

*The Women We Are* explores the layers of womanhood amidst the chaotic noise of modern life. Through calming colours and gentle details, figures emerge as pillars of support, illustrating the range of emotions and identities that hold us together. From free spirits to tender nurturers, inspiring leaders to vulnerable dreamers, we are a symphony of selves and the strength of all the varied women within is what keeps us whole.



Xanh  
by Viet-My Bui  
Acrylic gouache on timber panel  
20cm x 25cm  
\$375

In Vietnamese, *Xanh* can mean blue or green. This artwork portrays the dualism of interior and exterior worlds—the opposing forces of one’s true self against societal and cultural pressure. There is a quiet resilience and softness in this character. Though fragile, she continues to bloom

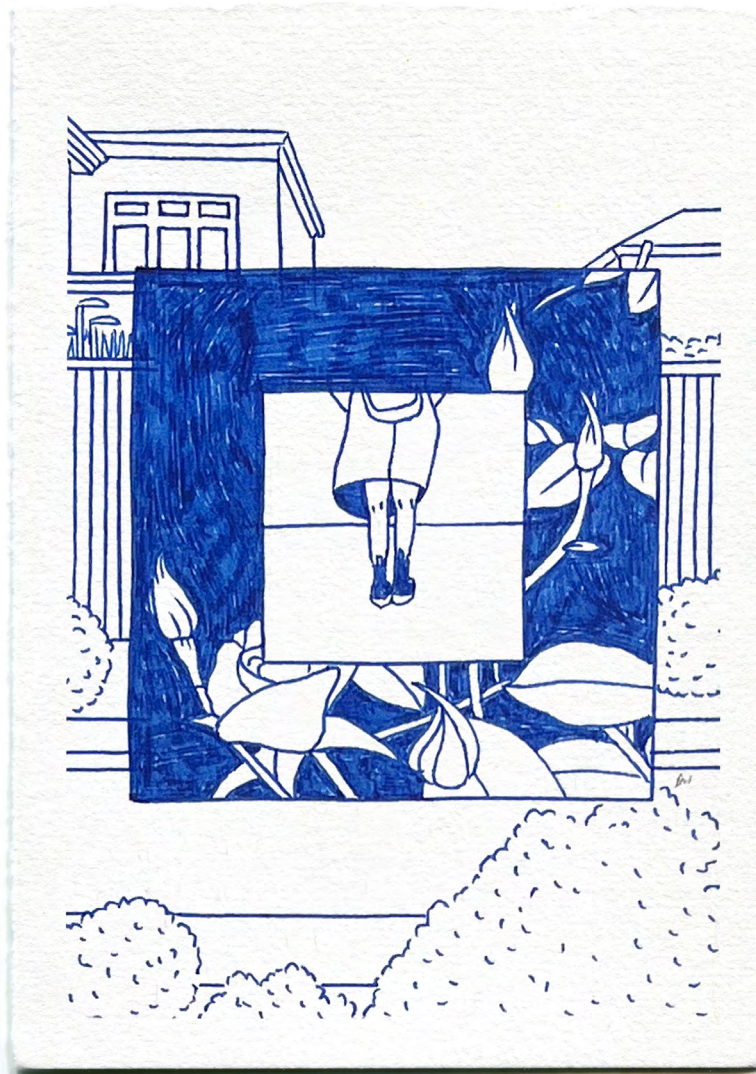




Friends of All Kinds  
by Caitlyn Mulligan  
Acryla Gouache and Gouache on panel, framed  
23 x 23cm  
\$400 **SOLD**



Be wild, that is how to clear the river  
by Rachel Derum  
paper collage framed  
41cm x 32cm  
\$550



Asymmetrical Hemispheres  
by Alexis Winter  
Fineliner on archival paper framed  
23cm x 28cm  
\$200

This piece depicts the constant duality of the roles women play in the world around us. We must be independent and self-assured, yet vulnerable and gentle. We grow and expand in accordance with our passions, but often the environments we find ourselves in are not prepared for us or built to house our dreams. We attempt as a collective to create a safe place in the world for us to inhabit, yet we are often seen as a safe harbour or sense of home for others too. Never static, constantly evolving.



Eternal Return  
by Erika Rivera Iñiguez  
acrylic on canvas  
50 x 50cm  
\$450

This work depicts the vulnerability of being in constant change. Life has given us the joy of transformation and learning through experience.

For sales enquiries please  
email your name & phone number to:

**info@offthekerb.com.au**

or ring

**0400530464**

**We ship worldwide | We offer Laybuy**

---

**66B JOHNSTON STREET COLLINGWOOD**

T (03) 9077 0174 M 0400 530 464

info@offthekerb.com.au | www.offthekerb.com.au

Thur - Fri 12.00pm - 6.00pm | Sat - Sun 12.00pm - 5.00pm

