

SPRING DAYS

GROUP SHOW

OPENING: Fri 29 Sep 6-8pm
DATES: 28 Sep - 12 Oct 2023



Spring Daze
by Glen Downey
Acrylic on aluminium composite, framed
62.5cm x 62.5cm
\$2500 **SOLD**



Dandelion
by Yen Yen Lo
Raku clay, Underglazes, Glaze, Oxides
14.7cm (H) x 9cm (W)
\$310 **SOLD**



Pigface
by Yen Yen Lo
Raku clay, Underglazes, Glaze, Oxides
15cm (L) x 10.5cm (H)
\$400 **SOLD**



Predawn
by Aaron Condon
Watercolour and pencil on paper, framed
62 x 45cm
\$400



Rebirth at Alcatraz
by HWJ
Acrylic on birch board, framed in natural Tasmanian Oak
52.5cm x 42.5cm
\$1250

Continuing with his recent exploration of abstracted realism, HWJ chose to feature Alcatraz Prison in San Francisco bay. Enamored with the juxtaposition of the scene, a once violent, intimidating and oppressive place, he was fascinated with how it has been rebirthed into something covered in beauty and positivity. Now splashed with colour and housing wide variety of flowers and plants, 'The Rock' as it was once called, has been transformed into a garden paradise, providing a welcoming environment for tourists and explorers a like to enjoy the storied history of Island.



Human Blooming
by Chehehe
Recycled (dodgy) paper pulp relief print / hand carved block
31cm x 42cm x 1cm
\$450



Swan Song
by Kim Kermode
Acrylic on Birch Plywood
40 x 45cm
\$600

'Swan Song' by Kim Kermode is a painting that alludes to her love for fragile springtime flowers in nature. As the title suggests, the colourful beauty we witness in nature might be one of the last times we are able to see it in its abundance as the climate continues to shift and change.



Woman as fruiting tree
by Natalie Bessell
Oil pastel on wood, wooden frame
49x43cm
\$980



Neighbours
by Daniele Lugli
Medium: acrylic on marine ply, framed
32x32cm
\$450 **SOLD**



Late Bloomers
by Sharya Wick
Coloured pencil on paper, framed
13.5x30cm
\$280 **SOLD**



The Lake to the Sky
by Anne Kucera
Plein air watercolour on Saunders Waterford paper, framed
26.5cm x 17cm
\$380



Bathroom with Flowers
by Ben Taylor
Oil on canvas, framed
40cm x 50cm
\$720 **SOLD**



Slice of heaven
by Heidi Anderson
oil on canvas framed
20.3x25.4cm
\$620



Can you smell the Jasmine?
by Sarah Jane Lightfoot
Acrylic on Canvas, framed
40x40cm
\$500



Flying High
by Viet-My Bui
Acrylic & gouache on panel
35cm x 40cm
\$725 **SOLD**



Agatha
by Katie Chancellor
Acrylic on cut out wood
40 x 29cm
\$300



Moon priest
by Jack Howl
Ink and watercolour, framed
45x35cm
\$790



Closeness/The Gathering

by Orla Cook

wool, cotton, synthetic yarns embroidered on polycotton fabric, framed

54 x 64cm

\$2000



View from Rae Street
by Nicole Willis
Oil on wood, framed
27.5 x 22.5
\$380



Projected Image
by David Tatnall
silver gelatin print, framed
48.5 x 43.5cm
\$800



Time of the Season
by Julia Novella
Oil on canvas
10 x 8 inches
\$200 **SOLD**



Simpler Times '01
by Chris Costa
LED Neon
57 x 60cm
\$900



Sugar Moon
by Rachel Derum
paper collage, framed
42cm x 32cm
\$550

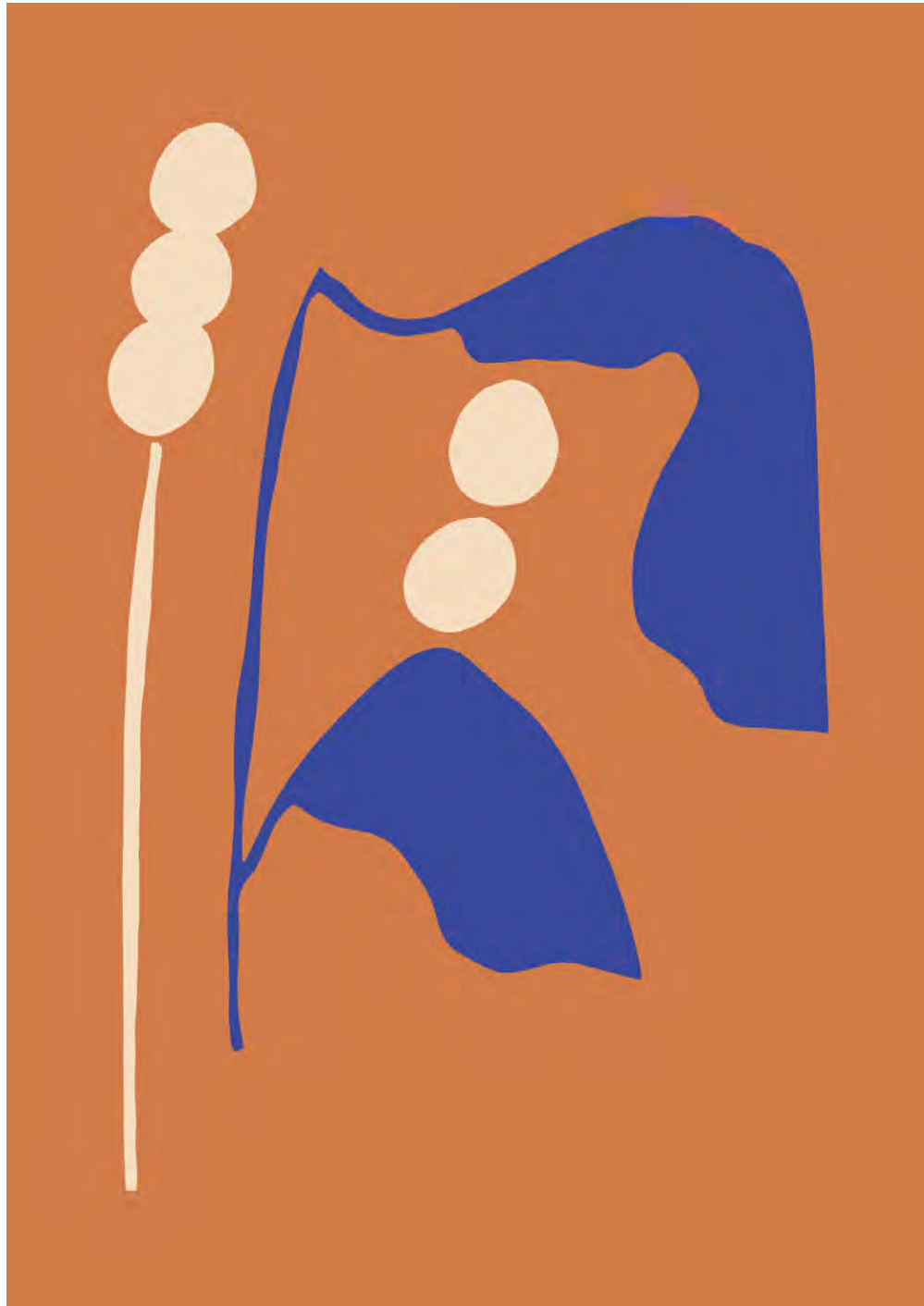


Sapling (Merri Creek)
by Timothy Perkins
Gouache on paper, framed
18x12.5cm
\$300 **SOLD**

(Proceeds from the sale of this artwork donated to Friends of the Merri Creek, a volunteer community group that has played an active and passionate role since 1988 in helping restore and protect the Merri Creek)



Emerald City
by Simone Lovett
Limited edition print 1/50, hand signed and numbered, framed
42 x 59cm
\$375 **SOLD**



Spiced Honey
by Simone Lovett
Limited edition print 1/ 50, hand signed and numbered, framed
42 x 59cm
\$375



One Man's Trash
by Helena Black
Acrylic on cradled wood panel
35cm x 40cm
\$550



Spring Blossom
by Lauren Ottaway
Crushed pigment and oyster shell on silk board, framed
30cm x 39.5cm
\$250



The Bremen Town Musicians
by Alexia Novella
Oil on Panel
30x20 cm
\$750 **SOLD**



WilderBeast #014
by Saint Jive
Hand-sewn Soft Sculpture
25cm H
\$200

*Likes: Being generally pessimistic, gloomy, and depressed, overcast weather and rain, sarcasm, dry humor, and Lo-fi beats.
Dislikes: Being alone and birthday parties*



Wilder-Beast #013
by Saint Jive
Hand-sewn Soft Sculpture
25 cm H
\$200

Likes: People watching (Always daydreaming of every passerby's life story), bathing in glow of the sun, and classical music (Once having the dream of playing in the Vienna Philharmonic, but unfortunately never grew arms)
Dislikes: Getting rain on their parade and out growing a pot



Bedford and Blossoms
by Stephen Doan
Acryla Gouache on Timber Panel
20cm x 20cm
\$790 **SOLD**

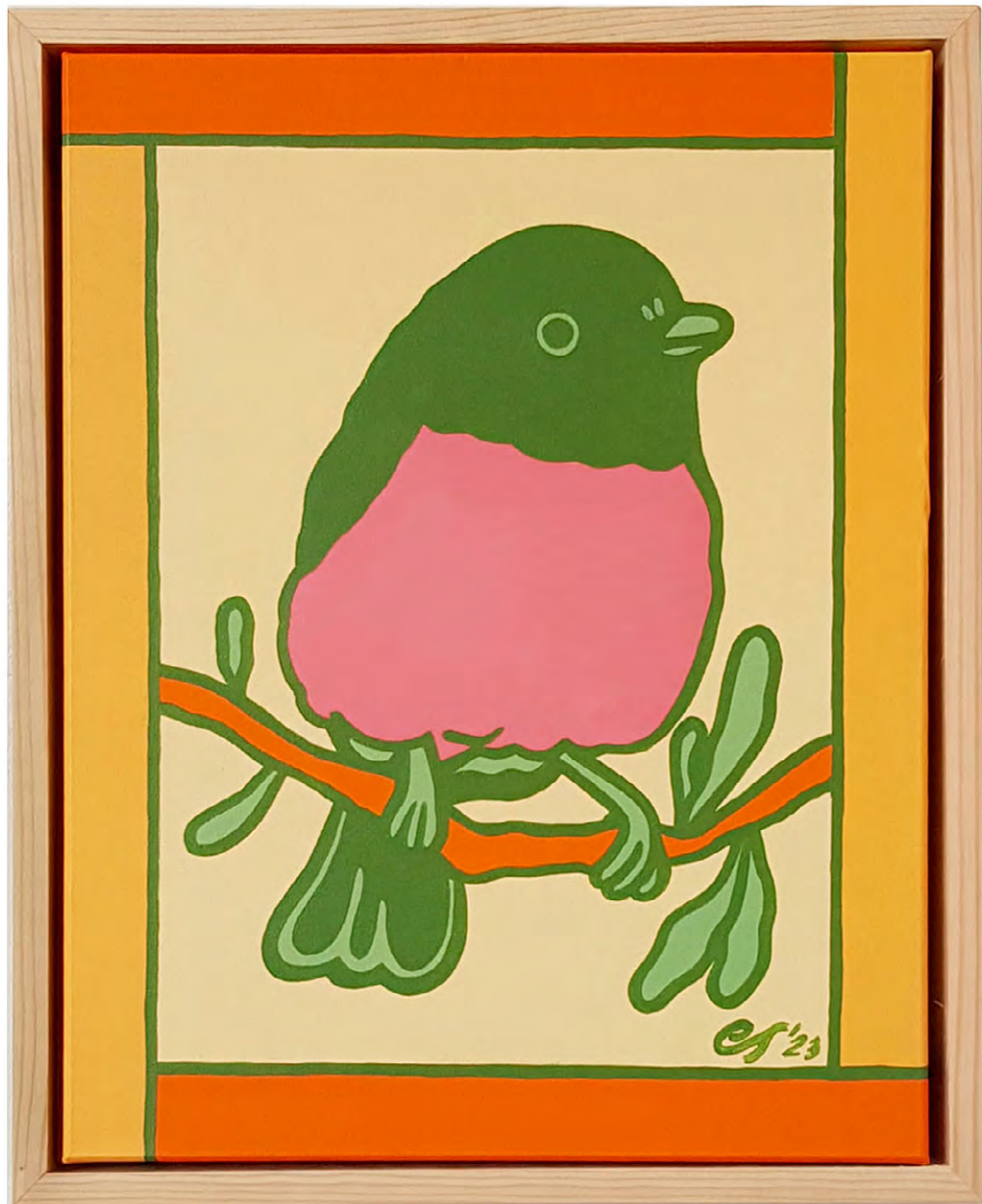


Warm Caress
by Cathy Yarwood-Mahy
Oil on canvas
76 x 76cm
\$900



Wist-full
by Kyra Hannah
Archival ink, pencil, copper foil, gouache on hand-cut paper in floating frame
41 cm x 31 cm
\$700

Wist-full explores core memories from the artist's childhood and adolescence. Deeply aware of the interconnectedness of our ecosystems, Kyra uses the black stem of the rock orchid to link together various species of the food web, who may all rely on each other for sustenance. The Christmas beetle at the heart of the red wattle bird signifies a time growing up in Queensland when the advent of spring heralded these insects landing on faces and hands, like fallen stars.



Pink Robin
by Carla Scotto
Acrylic on Canvas framed
32 x 38cm
\$450



Spring has Sprung
by Inkboy
Acrylic on Canvas framed
32 x 38cm
\$500 **SOLD**



Shady
by Asooraguy
Acrylic on canvas
60x50cm
\$750



La femme en fleur
by Caroline Le Jeune
acrylic on panel, Framed
40cm by 40 cm
\$580



Bloomin'
by Gala Jane
Tufted wool yarn wall rug
40x60cm
\$490



Elessar Ace
by Pricilla Ong
hand-cut deck of playing cards
6.5x9cm
\$333 **SOLD**

The seeing powers of the fabled sun encapsulating Elessar stone, through which everything that was aged and withered was seen as young again, is an embodiment of the reoccurrence of Spring. The playing card design connects with Priscilla's passion for folklore mysticism, illustration and her performances as a playing card illusionist. By utilising layering and subtraction of intricate sections the observer is presented with possibilities of how to further explore the Tolkien-inspired artwork, akin to a diorama viewpoint. The meticulous cutaways provide the floral elements a greater depth, as if representing generational renewal, and the reverent attention to space bestows upon the stone a regal focus.



Burning Sprite
by Priscilla Ong
acrylic on skateboard deck
20x80cm
\$555

The Pagan Beltane festival celebrates spring at its peak, being a symbolic gesture to entice the return of the growing power of the sun. Participants ignite bonfires, dance and jump over flames to be purified and be bestowed protection. Priscilla alludes to the presence of the fire element of the festival through visualising a cleansing generous life-giving fire spirit. This metaphorical whimsical character offers a plant to assist the commencement of rich growth and harvest. The skateboard, and the implied use of them for airborne tricks, suggest a contemporary take on jumping over the flames, with a colour palette and mark marking reminiscent of an ancestral era, bridging the past to the future.

For sales enquiries please
email your name & phone number to:

info@offthekerb.com.au

or ring

0400530464

We offer Laybuy | We ship worldwide



66B JOHNSTON STREET COLLINGWOOD

T (03) 9077 0174 M 0400 530 464

info@offthekerb.com.au | www.offthekerb.com.au

Thur - Fri 12.30pm - 6.00pm | Sat - Sun 12.00pm - 5.00pm